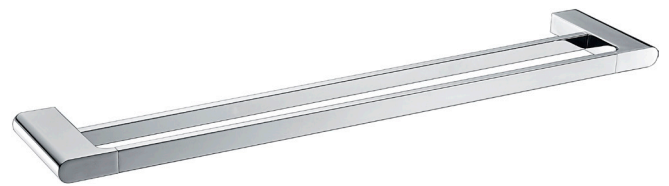
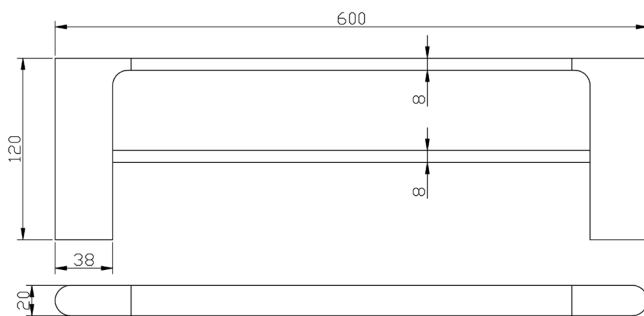
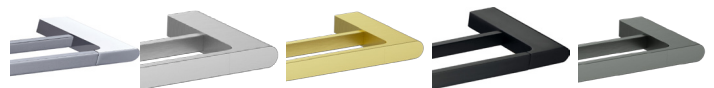


P&P



Available in



5302-600-CW	5302-600-BN	5302-600-BG	5302-600-MB	5302-600-GM
Chrome & White	Brushed Nickel	Brushed Gold	Matt Black	Gun Metal

Cora Double Towel Rail

5302-600

Information

Finish: Chrome
Material: Brass & Zinc Alloy
Size: 600mm

Maintenance and Care

- Do not use harsh detergents or products that contain chloride & halides.
- Do not use abrasive, cream or citrus based cleaners or hydrochloric acid.
- Surface should be cleaned only with a mild detergent that must be rinsed off.
- It is suggested to only clean with warm water and a soft cloth.
- Damage caused by the wrong cleaning methods used will void warranty.

Please visit <https://www.aclco.com.au/warranty.html> to view the full warranty